

NOTES  
COORDINATES, BEARINGS AND DISTANCES

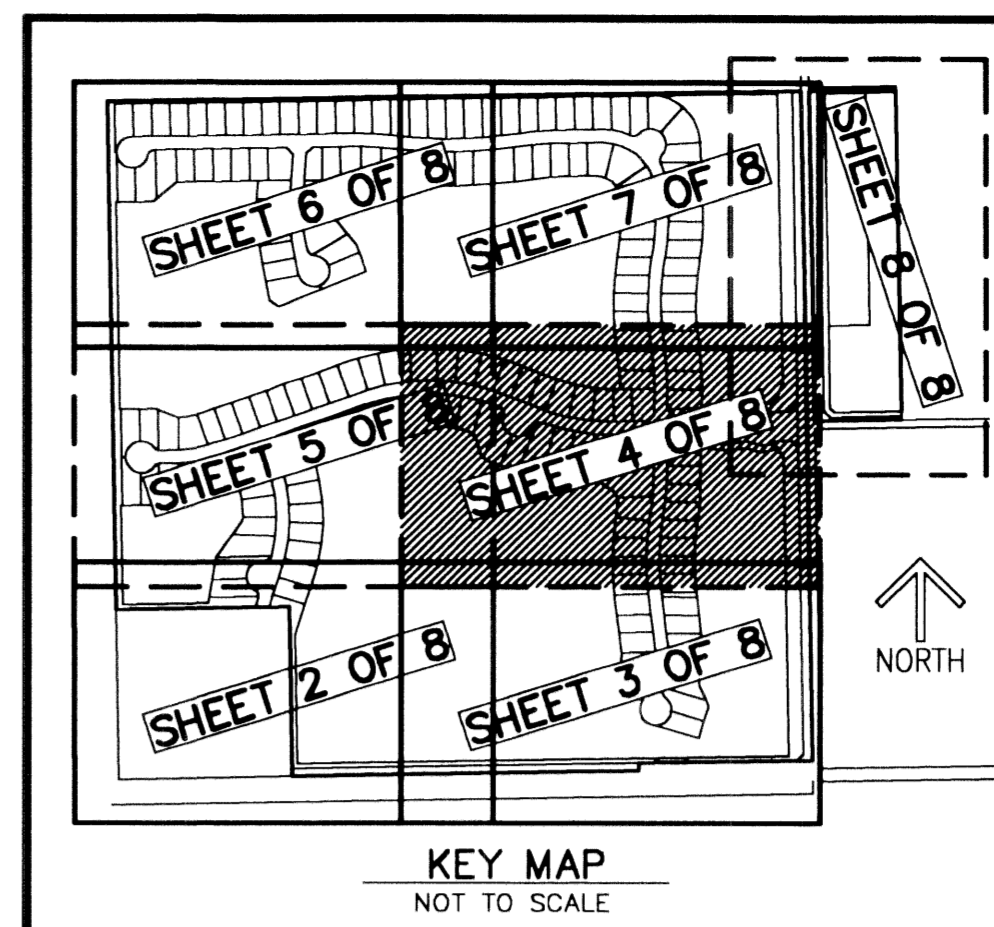
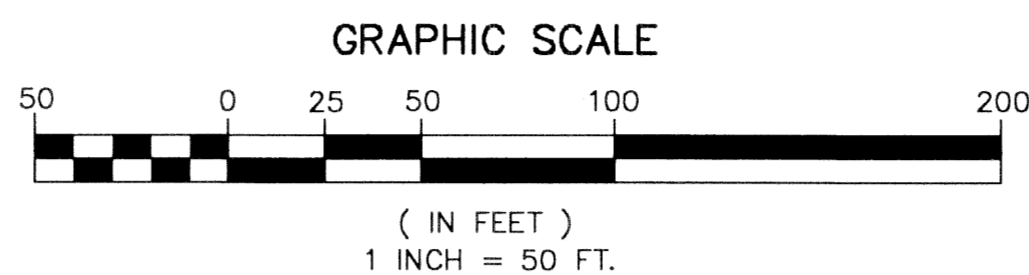
COORDINATES SHOWN ARE GRID  
DATUM = NAD 83 1990 ADJUSTMENT  
ZONE = FLORIDA EAST  
LINEAR UNIT = US SURVEY FEET  
COORDINATE SYSTEM 1983 STATE PLANE  
TRANSVERSE MERCATOR PROJECTION  
ALL DISTANCES ARE GROUND  
SCALE FACTOR = 1.0000223  
GROUND DISTANCE X SCALE FACTOR = GRID DISTANCE  
BEARINGS AS SHOWN HEREON ARE GRID DATUM,  
NAD 83 1990 ADJUSTMENT, FLORIDA EAST ZONE.

0858-001

# WELLINGTON VIEW

A PLANNED UNIT DEVELOPMENT, BEING A REPLAT OF A PORTION OF BLOCK 11, PALM BEACH FARMS COMPANY PLAT NO. 3,  
AS RECORDED IN PLAT BOOK 2, PAGES 45 THROUGH 54, OF THE PUBLIC RECORDS OF PALM BEACH COUNTY, FLORIDA,  
LYING IN SECTIONS 5, 6, 7 AND 8 TOWNSHIP 44 SOUTH, RANGE 42 EAST, PALM BEACH COUNTY, FLORIDA

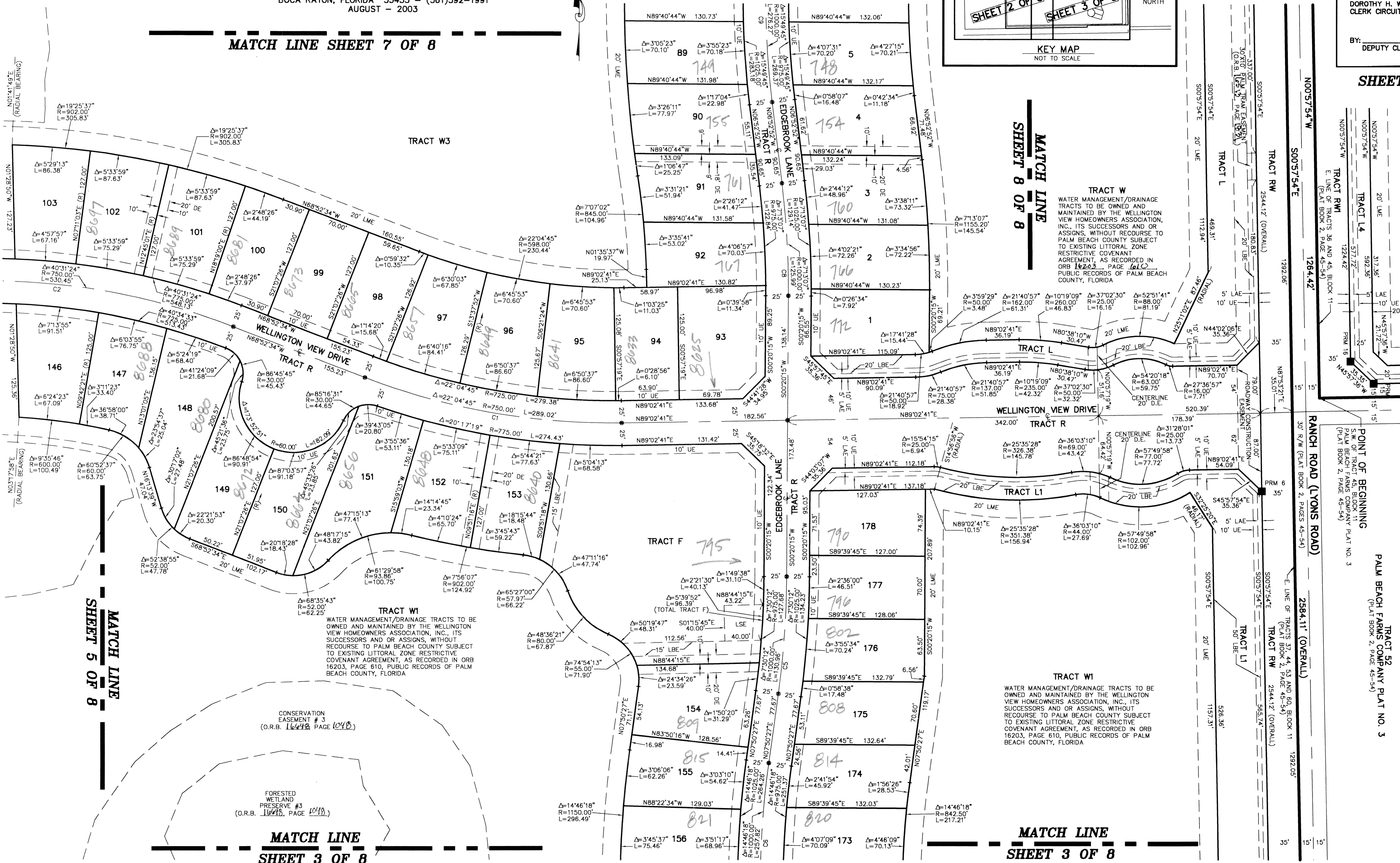
THIS INSTRUMENT PREPARED BY  
DAVID P. LINDLEY  
OF  
CAULFIELD and WHEELER, INC.  
SURVEYORS - ENGINEERS - PLANNERS  
7301-A WEST PALMETTO PARK ROAD, SUITE 100A  
BOCA RATON, FLORIDA 33433 - (561)392-1991  
AUGUST - 2003



STATE OF FLORIDA  
COUNTY OF PALM BEACH  
THIS PLAT WAS FILED FOR  
RECORD AT \_\_\_\_\_ M.  
THIS \_\_\_\_\_ DAY OF \_\_\_\_\_  
A.D. 2004 AND DULY RECORDED  
IN PLAT BOOK \_\_\_\_\_ ON  
PAGES \_\_\_\_\_ AND \_\_\_\_\_

BY: \_\_\_\_\_  
DEPUTY CLERK

SHEET 4 OF 8



MATCH LINE SHEET 7 OF 8

MATCH LINE SHEET 8 OF 8

MATCH LINE SHEET 5 OF 8

MATCH LINE SHEET 3 OF 8

MATCH LINE SHEET 3 OF 8

TRACT W1  
WATER MANAGEMENT/DRAINAGE TRACTS TO BE OWNED AND MAINTAINED BY THE WELLINGTON VIEW HOMEOWNERS ASSOCIATION, INC., ITS SUCCESSORS AND OR ASSIGNS, WITHOUT RECOURSE TO PALM BEACH COUNTY SUBJECT TO EXISTING LITTORAL ZONE RESTRICTIVE COVENANT AGREEMENT, AS RECORDED IN ORB 16203, PAGE 610, PUBLIC RECORDS OF PALM BEACH COUNTY, FLORIDA

TRACT W1  
WATER MANAGEMENT/DRAINAGE TRACTS TO BE OWNED AND MAINTAINED BY THE WELLINGTON VIEW HOMEOWNERS ASSOCIATION, INC., ITS SUCCESSORS AND OR ASSIGNS, WITHOUT RECOURSE TO PALM BEACH COUNTY SUBJECT TO EXISTING LITTORAL ZONE RESTRICTIVE COVENANT AGREEMENT, AS RECORDED IN ORB 16203, PAGE 610, PUBLIC RECORDS OF PALM BEACH COUNTY, FLORIDA

CONSERVATION EASEMENT # 3  
(O.R.B. 16648, PAGE 1048)

FORESTED WETLAND PRESERVE #3  
(O.R.B. 16648, PAGE 1048)

POINT OF BEGINNING  
S.W. CORNER OF TRACT 45, BLOCK 11  
PALM BEACH FARMS COMPANY PLAT NO. 3  
(PLAT BOOK 2, PAGE 45-54)

TRACT 52  
PALM BEACH FARMS COMPANY PLAT NO. 3  
(PLAT BOOK 2, PAGE 45-54)

STATION: Wellington View  
BOOK: 02  
FLOOD ZONE: B  
QUAD: 47  
TAZ: 72  
PUD NAME: \_\_\_\_\_

43